



LINEA ACRISYL

Abc riflessi

Finitura decorativa effetto cangiante per interno

Decorated finishing effect for interiors

made
in italy

Emozioni decorative

Decorative emotions

**san
marco**
SISTEMI VERNICIANTI PER L'EDILIZIA

Abc riflessi



0001 Base Madreperla/ Mother-of-pearl



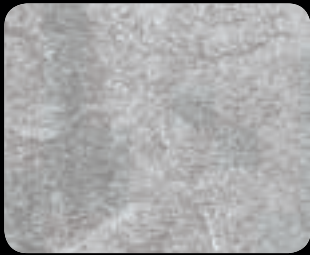
0120 Madreperla/ Mother-of-pearl



0080 Madreperla/ Mother-of-pearl



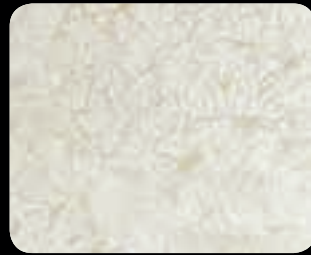
0210 Lucido/ Brillant



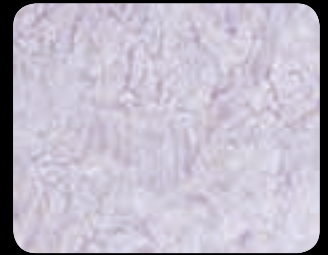
0070 Madreperla/ Mother-of-pearl



0150 Madreperla/ Mother-of-pearl



0171 Lucido/ Brillant



0191 Lucido/ Brillant



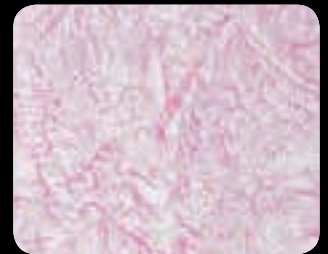
0100 Madreperla/ Mother-of-pearl



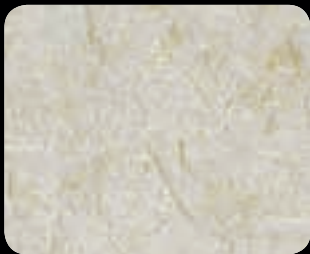
0111 Madreperla/ Mother-of-pearl



0161 Lucido/ Brillant



0202 Lucido/ Brillant



0130 Madreperla/ Mother-of-pearl



0111 Madreperla/ Mother-of-pearl



0221 Lucido/ Brillant



0201 Lucido/ Brillant



0140 Madreperla/ Mother-of-pearl



0090 Madreperla/ Mother-of-pearl



0230 Lucido/ Brillant



0180 Lucido/ Brillant



0010 Cangiate/ Iridescent



0040 Cangiate/ Iridescent



0030 Cangiate/ Iridescent



For the selection of colours, go to [Abc riflessi](#) colour chart cod. 55063

Abc riflessi

Finitura decorativa effetto cangiante per interno

Preziose e vibranti atmosfere, dall'effetto cangiante e madreperlaceo che, declinati nei diversi colori, rendono questo decorativo la soluzione ideale per un ambiente giovane ed esclusivo. Facile applicabilità e molteplici effetti che liberano le idee nella progettazione di spazi contemporanei.

Abc riflessi viene applicato in 1-2 strati con resa indicativa di 8-12 m²/l.

Attrezzi: tampone, spugna, spatola in plastica, rullo decorativo.

Decorated finishing effect for interiors

Exquisite, vibrant atmospheres with a shimmering, mother-of-pearl effect which, in the various colours, make this decorative finish the ideal solution for a young environment with an exclusive look. Easy to apply and obtain various effects, there is no limit to contemporary design ideas with this product.

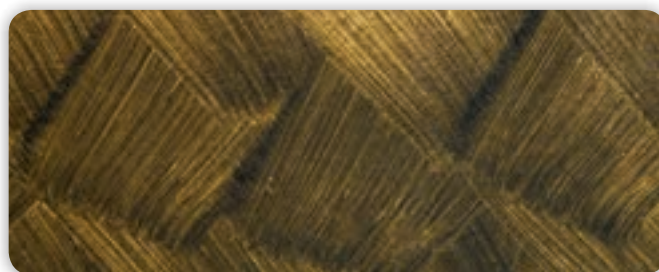
Abc riflessi is normally applied in 1-2 coats, with an indicative spreading rate of 8-12 m²/l per coat.

Tools: paint pad, sponge, plastic painting knife, decorative roller.

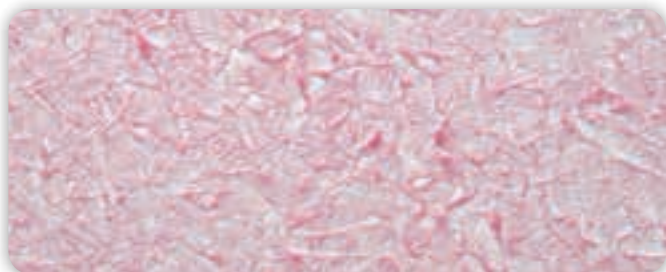
Effetti - Effects



Effetto spatolato - Tinta 0010 su fondo nero
Trowelled effect - Shade 0010 on black base coat



Effetto pennellato - Tinta 0010 su fondo nero
Brushed effect - Shade 0010 on black base coat



Effetto tamponato - Tinta 0202 su fondo bianco
Padding effect - Shade 0202 on white base coat



Effetto spugnato - Tinta 0120 su fondo bianco
Sponge effect - Shade 0120 on white base coat



Effetto con riflessi - Tinta 0010 su fondo Stucco veneziano bianco
Reflex effect - Shade 0010 on Stucco veneziano white base coat



Colorificio San Marco SpA
Via Alta 10 - 30020 Marcon (VE) - Italy
Tel +39 041 4569322 - Fax +39 041 5950153
e-mail: info@san-marco.it
export@san-marco.it
www.san-marco.it
www.emozionidecorative.it

COMPANY WITH
QUALITY SYSTEM
CERTIFIED BY DNV
= ISO 9001 =